

A project by



Happiness you  
ALWAYS DESIRED.

# ALPINE

The smart living



2 BHK LUXURY APARTMENTS @ POSTAL COLONY, GUNTUR



# ALPINE

The smart living

## PROJECT HIGHLIGHTS

- 100% vastu
- Rain Water Harvesting
- Power back-up
- Cable TV provision
- Intercom Facility
- Solar hot water
- CCTV Camera
- Car parking

## Area Statement

Flat No.	Area in Sft.
1	1100
2	1100

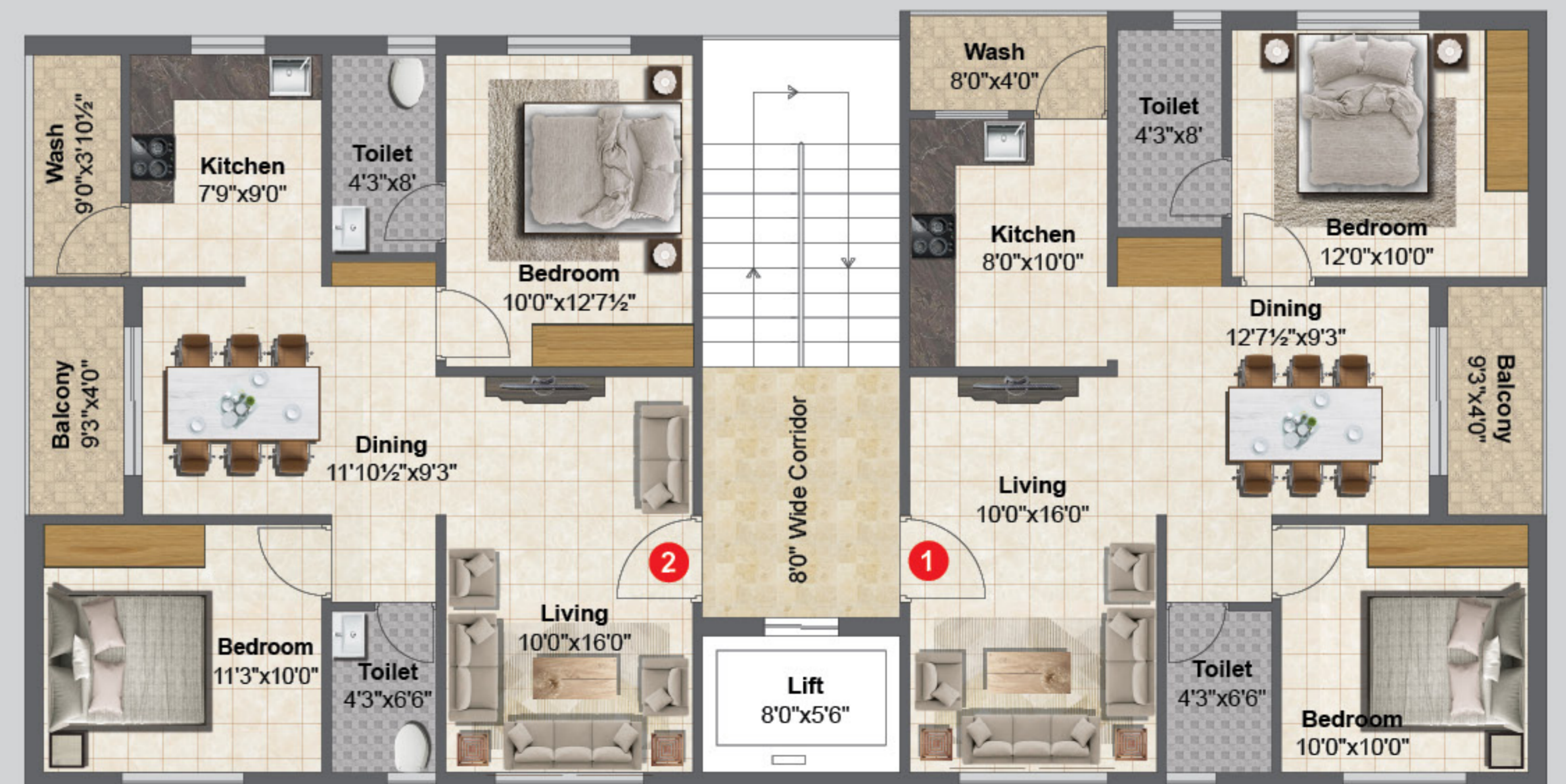


## Lifestyle you will cherish forever.

Take your dreams and desires to utmost heights, as here's a home that will have you feeling pleased in every single step. **Access Builders** presents **Alpine**, an exclusive 2 BHK community with only two flats on each floor of 1100 sft each. It's really here that you will find the quietness you always wanted, the peace you always dreamed about and a lifestyle that will please you for a lifetime. Come explore life in this wonderful community that is for people like you.



## TYPICAL FLOOR PLAN





## SPECIFICATIONS

### STRUCTURE

RCC-framed structure.

### SUPER STRUCTURE

All external walls of 9" thickness and all internal walls of 4 ½" thickness red brick.

### FLOORING

Vitrified tile flooring in bedrooms, kitchen, living area, dining area.

Ceramic tiles in bathrooms, balconies and wash areas.

Toilets: Best quality acid-resistant, anti-skid ceramic tiles.

### ELECTRICAL

Concealed copper wiring of reputed make. Three-phase power supply for each unit and individual meter boards. Power plug for refrigerator, microwave oven and mixer / grinders in kitchen. Plug point for TV and audio systems etc. Miniature Circuit Breakers (MCB) & ELCB for each distribution board.

### PLASTERING

Plastering to ceiling and walls in cement mortar with sponge finish.

### PAINTING

External: Twocoats of exterior weather coat of reputed make.

Internal: Wallcare with premium emulsion paints.

### TOILETS

All toilets will consist of EWC. Hot and cold single lever mixer with shower.

### WOOD WORK

**Main Door:** Best teakwood frame and shutter aesthetically designed with melamine matt polish fixed with door eye view and standard fittings.

**Internal Doors:** Teakwood frame with quality flush doors, fixed with reputed make hardware.

**Windows:** UPVC frames and shutters and MS grills for windows.

### TILES DADOING

**Kitchen:** Vitrified glazed concept ceramic tiles dado upto 2' height above the kitchen platform.

**Toilets:** Concept ceramic tiles dadoing upto lintel level.

### KITCHEN

Granite platform with stainless steel sink. Provision for water-purifier.

### LIFT

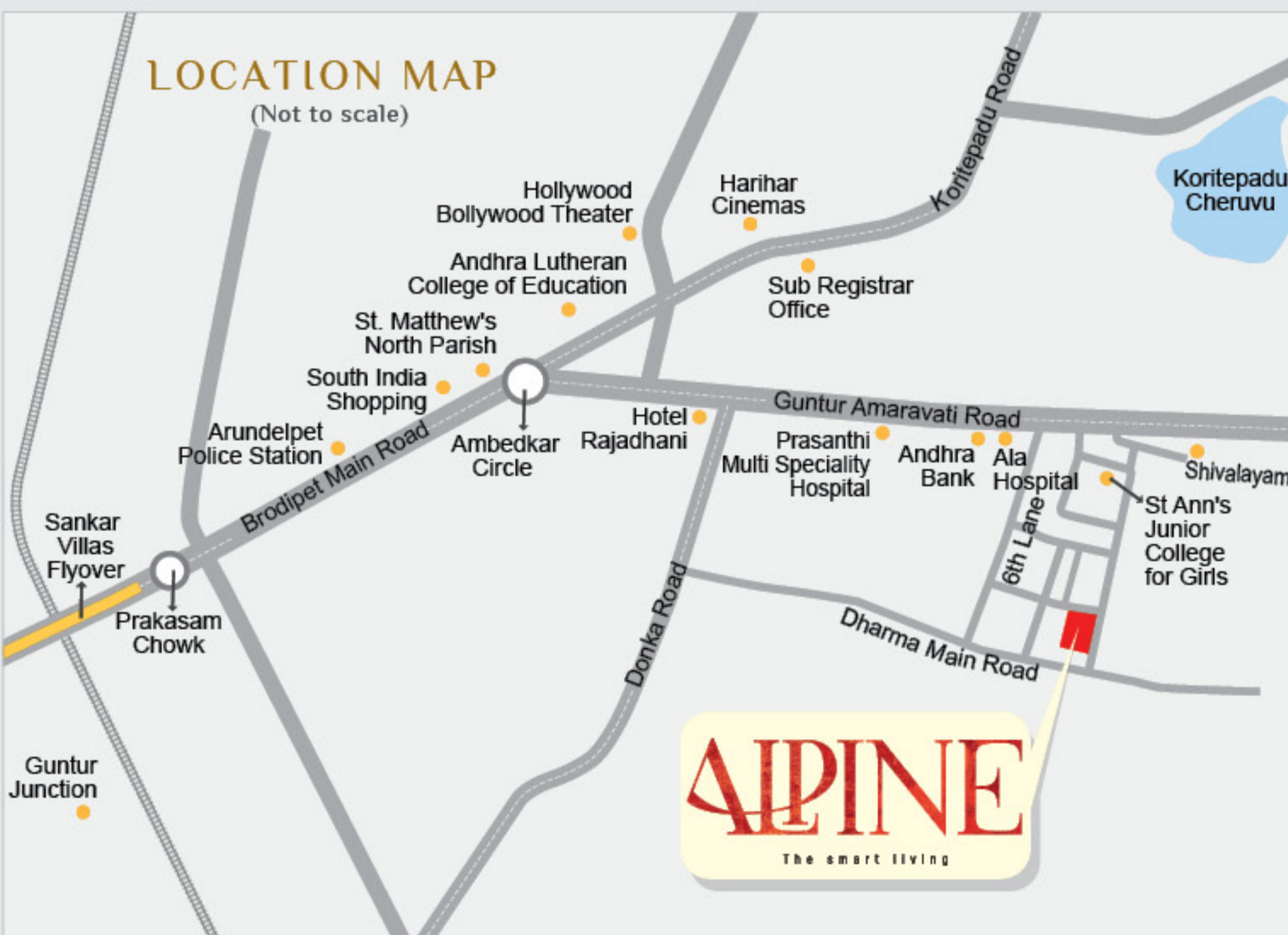
Lift of reputed make.

### GENERATOR

Back-up supply for common areas, lift and motors.

### PARKING

One car parking for each flat.



Builders & Developers

**ACCESS BUILDERS**

Let's make the next

Flat no. 302, Vedik Enclave,  
Gorantla, Guntur, 522034

Contact: **99001 98549**

accessbuilders9@gmail.com

www.accessbuilders.in

Note: This brochure is only a conceptual presentation of the project and not a legal offering. The promoters reserve the right to make changes in plans, specifications and elevation as deemed fit.

Artifice +91 98852 53570